

USER MANUAL

S-Band Patch Antenna Type II

1	Change log	4
2	Acronyms list.....	4
3	Overview.....	5
4	Highlighted Features	5
5	Antenna Layout	5
6	Antenna Parameters	6
7	Included in the Shipment.....	7
8	Handling and Storage	8
9	Warnings.....	8

S-BAND PATCH ANTENNA TYPE II

USER MANUAL

This user manual details the applications, features and operation of EnduroSat's S-Band Patch Antenna Type II.

Please read carefully the manual before unpacking the antenna in order to ensure safe and proper use.

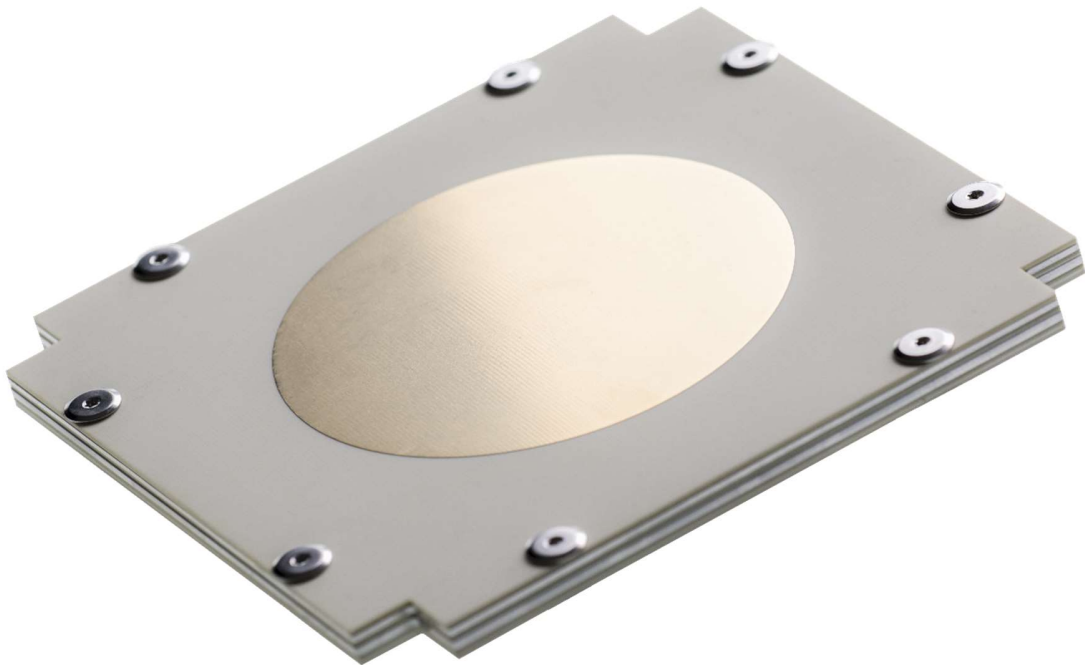


Figure 1: Endurosat's S-Band Patch Antenna Type II

1 CHANGE LOG

Date	Version	Note
05/12/2018	Rev 1	Initial iteration

2 ACRONYMS LIST

RF	Radio Frequency
RHCP	Right Hand Circular Polarization
LHCP	Left-Hand Circular Polarization
SMA	Sub-Miniature version A

6 ANTENNA PARAMETERS

Figure 3 shows the simulated return loss of the antenna.

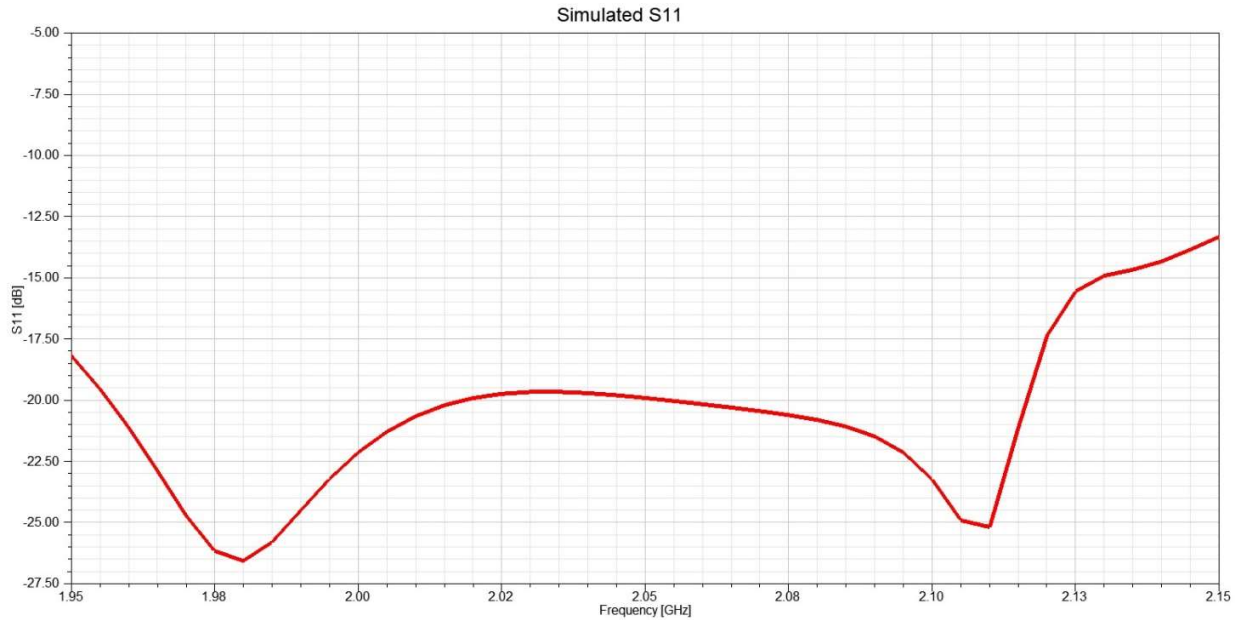


Figure 3: Simulated Return Loss of the Antenna

Figure 4 shows the simulated gain with respect to frequency.

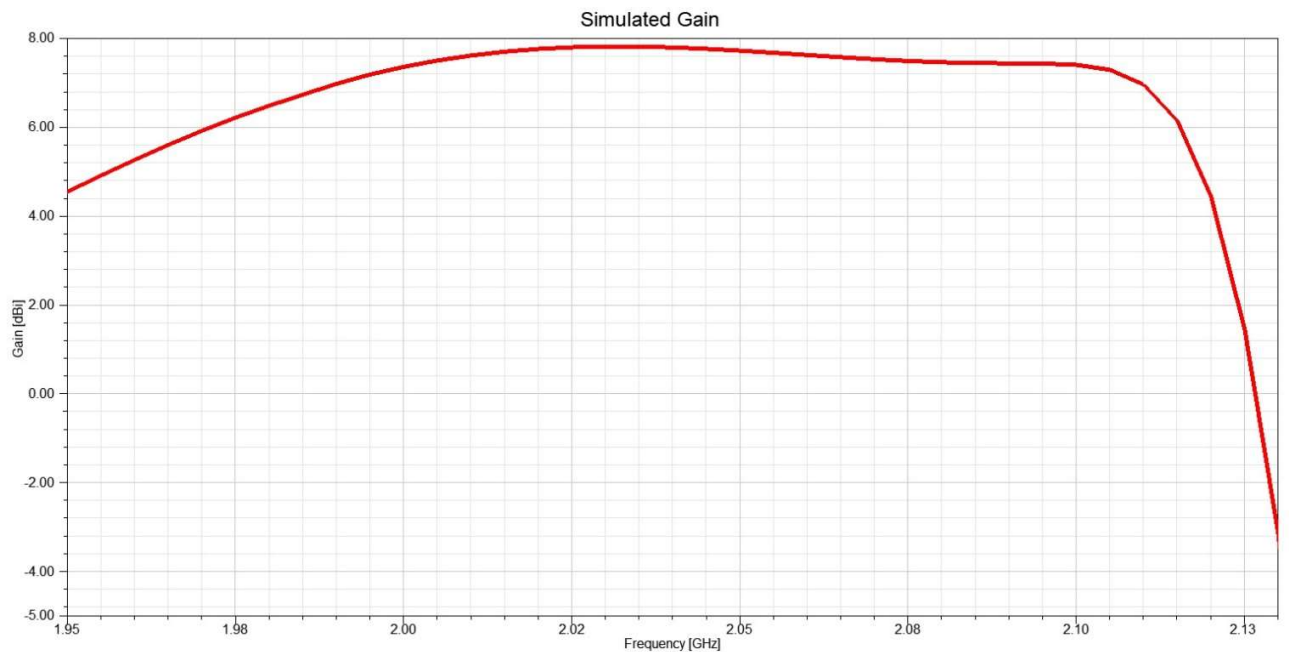


Figure 4: Simulated Gain

Figure 5 depicts the simulated radiation pattern of the antenna at 2.067 GHz for phi (azimuth) angles: 0°, 45°, 90° and 135°.

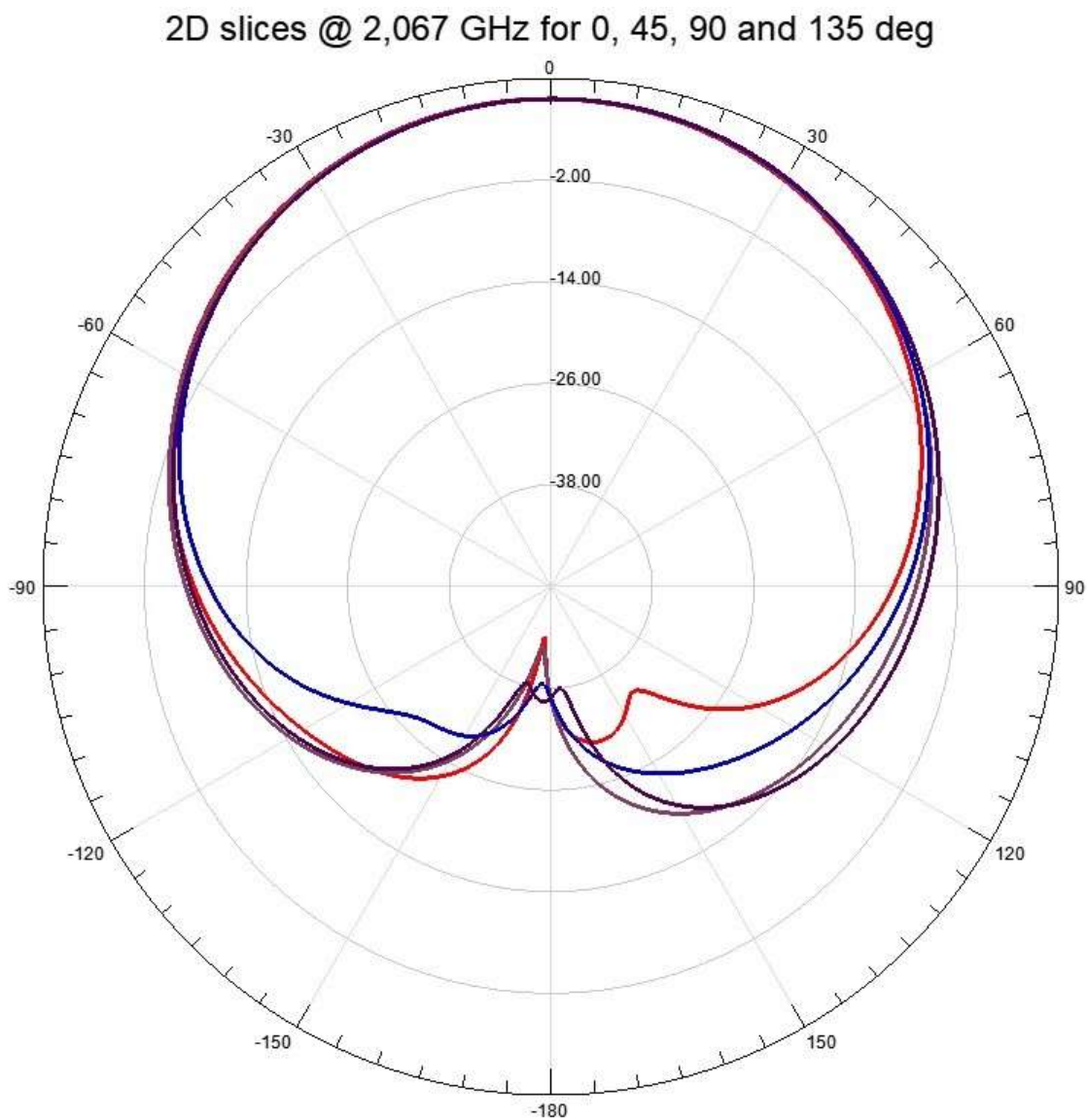


Figure 5: Simulated Radiation Pattern

7 INCLUDED IN THE SHIPMENT

EnduroSat provides additional items with the S-Band Patch Antenna:

- USB stick with user manual

8 HANDLING AND STORAGE

Particular attention shall be paid to the avoidance of damage to the antenna during handling, storage and preservation. The handling of the antenna should be performed in compliance with the following instructions:

- Handle using PVC, latex, cotton (lint free) or nylon gloves.
- The environment where the antenna will be handled shall meet the requirements for a class environment 100,000, free of contaminants such as dust, oil, grease, fumes and smoke from any source.
- Store in such a manner as to preclude stress and prevent damage.
- To prevent deterioration, the antenna must be stored in a controlled environment, i.e. the temperature and humidity levels shall be maintained in the proper ranges:
 - Ideal storage temperature range: 15°C to 27°C
 - Ideal storage humidity range: 30% to 60% relative humidity (RH)

9 WARNINGS



This product uses very fragile components. Observe precautions for Handling.